



**30 Parkhead Gardens, Edinburgh,
EH11 4RR
“the Property”/ “the House”)**

Chamber Reference: FTS/HPC/RP/24/5358

SCHEDULE OF PHOTOGRAPHS



1 Front Elevation of Property.



2 Oven.



3 Damaged handle to kitchen window.



4 Plastering and painting undertaken to walls in Kitchen.



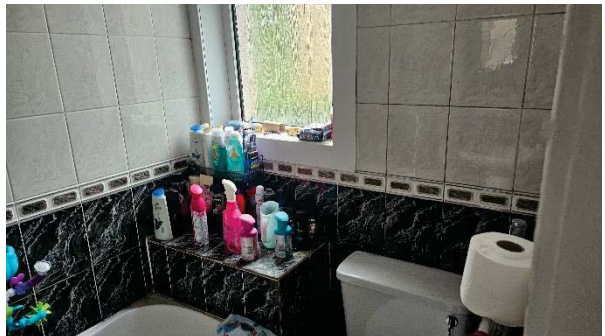
5 Example of incomplete filler over reinforcement tape to recent plastering works.



6 Living Room skirting refixed.



7 Wash basin in Bathroom.



8 General view of Bathroom.



9 Distribution board.



10 Distribution board.



11 Hallway light fitting – hanging loose and not secured to ceiling bracket.



12 Defective cistern flush.



13 Lever handle to entrance door – cover plate loose.



14 Entrance door – letterbox.



15 Entrance door – smoke testing.



16 Bathroom – general view.



17 Minor water damage to bath panel.



18 Small void adjacent to wash basin.



19 Sealant to bath.



20 Defective plasterwork adjacent to rear door.



21 Stored white goods.



22 Rear garden.



23 Cooker hood canopy in Kitchen.



24 View of Kitchen panelled ceiling.



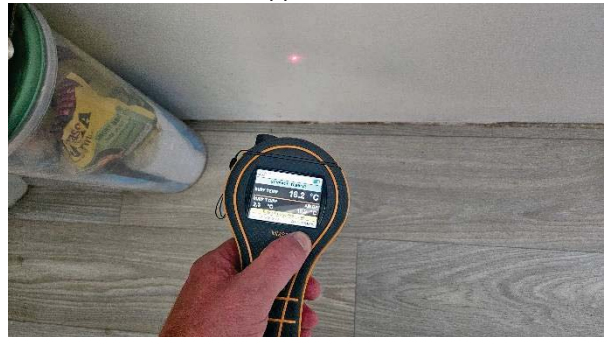
25 Trickle vent in closed position.



26 Low level of wall to appliance recess in Kitchen.



27 Psychrometric data – elevated relative humidity noted.



28 Condensation test in Kitchen – surface temperature above dewpoint however surface humidity at 87.3%.



29 Minor mould growth at void area in Kitchen.



30 Living Room – mould present to external wall.



31 Condensation test - surface temperature above dewpoint however surface humidity at 85.7%.



32 Dry skirtings to Living Room.



33 Elevated reading at base of wall to Living Room external wall.



34 Elevated reading at base of wall to Living Room external wall.



35 Bedroom – mould contamination.



36 Condensation test in Bedroom - surface temperature above dewpoint however surface humidity at 90.7%.



37 Condensation test in Bedroom - surface temperature above dewpoint however surface humidity at 89.0%.



38 Psychrometric data – high relative humidity.